

# Elderly children

Three Y Zetto

Zsombor Koszegi, Yuexin Li,  
Yukiko Tateyama, Yuko Kurushima

Facilitator: Lily

# Background

Yukiko Tateyama



**Global Health  
Epidemiology**

Zsombor Koszegi



**Neuroscience**



**Gerodontology**

Yuko Kurushima



**Economics**

Yuexin Li

# Inequality







# Elderly

- Lack of social environment (loneliness)
- Meaningless life (lack of recognition/appreciation from the society)
- Few job opportunities
- Outdated skill set
- Being poor
- Poor health might not support a full time position
- Lack of exercise and rehabilitation

# Children

- Insufficient childcare facilities
  - Short opening hours
  - Sick children
- Core family traditions are not valued
  - lack of example (education)



# Solution

Business idea: job opportunity for the elderly in kindergartens





# “Second Home”

## Elderly problems

- Loneliness
- Meaningless life (appreciation)
- Few job of opportunities (full time)
- Outdated skill set
- Being poor
- Lack of exercise
- Lack of rehabilitation
- No motivation to learn new technologies

## Children problems

- Lack of childcare facilities
- Short opening hours
- Sick children stay at home
- Lack of example (education)
- Do not meet elderly people

# Core Business Values

1. To provide low cost accommodation for the elderly
2. To provide a healthy & stimulating social environment for the elderly
3. To provide a meaningful role in society through job opportunities for both genders
4. To provide children with an intergenerational environment
5. To reduce the burden of parenting on parents
6. To collaborate with academia, industry, and government
7. Generated profit must be recycled

children

SECOM  
Security

Entrance

24H, 365 days open

Health  
Center  
(Nursing Care)

elderly

Ground

for children  
elderly

Garden



Kindergarten

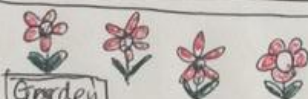
(0-6 years)



Community  
Hall

- Education Center
- cafe
- Dining

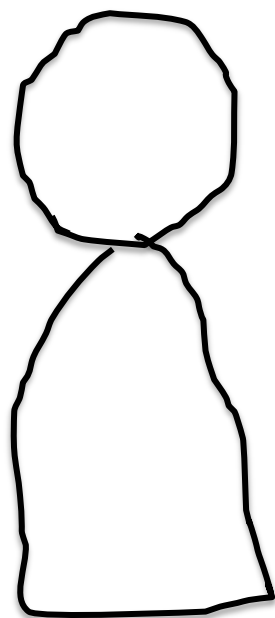
Garden



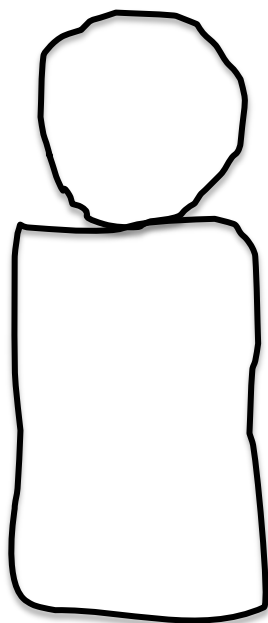
Residential Area

Constructed by DAIWA

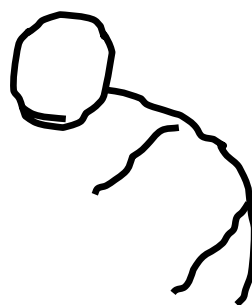
# Example



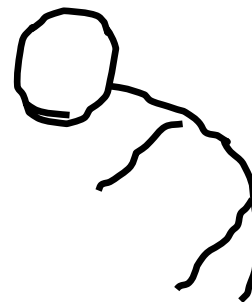
Diana



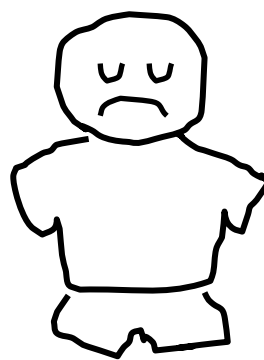
Koji



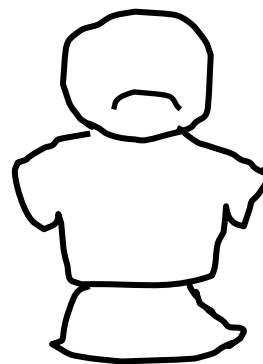
Syouzi



Kinue



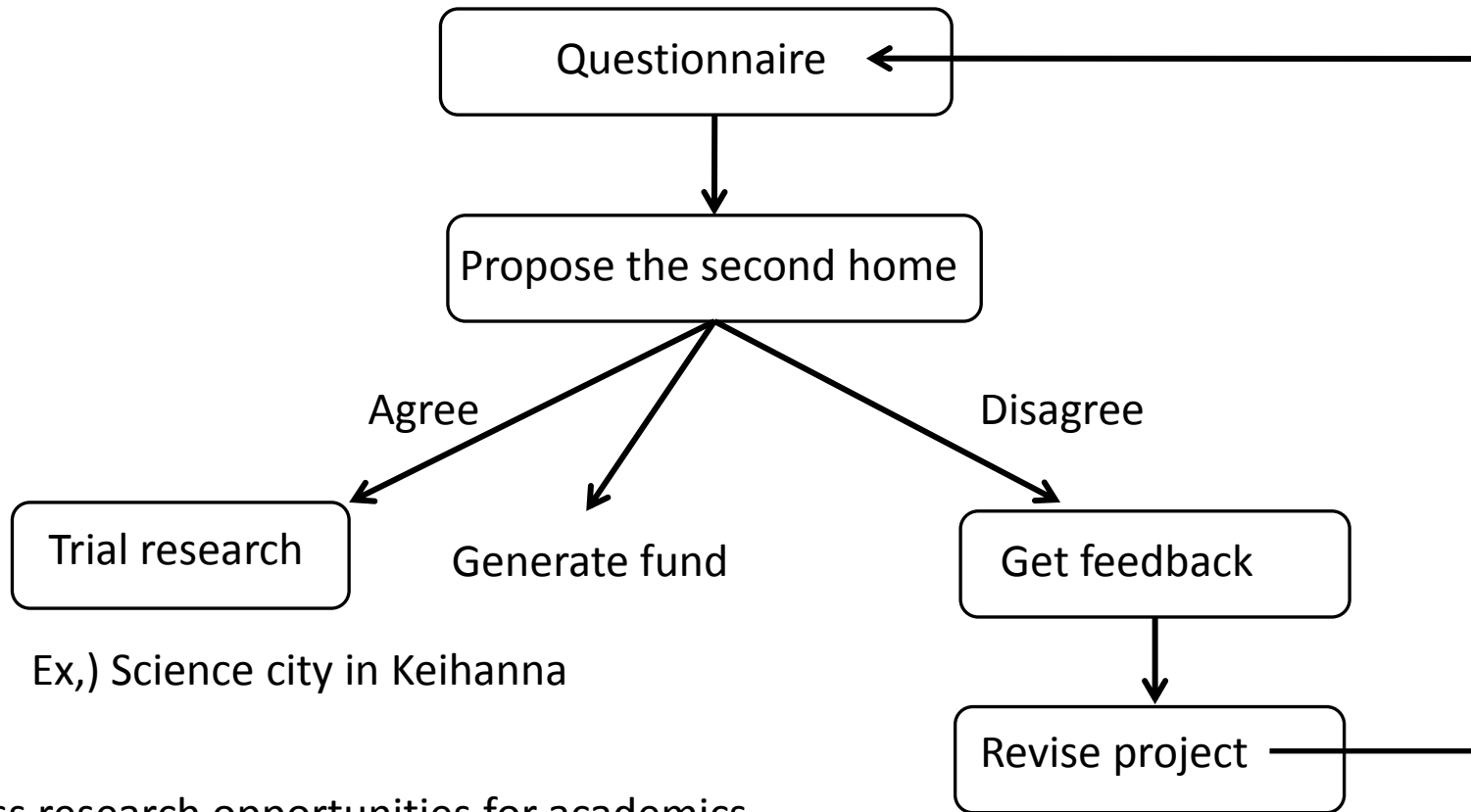
Taro



Hana

# Research Proposal

Would you like to join “Second Home”?



Endless research opportunities for academics.



